

## OCEAN ROAD CANCER INSTITUTE

## COMPANY PROFILE



# TABLE OF CONTENTS

---

1. Executive Summary .....	3
1. ORCI Overview .....	4
2. Mandated Functions.....	6
3. Location and Contacts.....	8
4. Strategic Description.....	9
5. Description of services: .....	13
6. Health Insurance clinic .....	22

## EXECUTIVE SUMMARY

---



The Ocean Road Cancer Institute (ORCI) was established by an Act Nr 2 of 1996 of the National Parliament of Tanzania. It is a public institution under the Ministry of Health and provides comprehensive cancer care. ORCI is committed towards providing quality care to cancer patients as per National Health Policy as well as international standards focusing on prevention, diagnosis, treatment, palliative, training and research services.

The Institute serves more than 65,000 patients per year including about 10,000 new patients and more than 55,000 follow-up patients coming from all over the country. The institute works in partnership with the community and stakeholders to create and maintain an integrated, accessible, and affordable cancer health care system with quality service to improve health and well-being of its patients. ORCI offers inpatients and outpatient services, general laboratory services, diagnostic imaging, nuclear medicine scans, chemotherapy, radiotherapy, palliative care services, vaccination services, cancer screening, nuclear medicine and a HIV/AIDS care.

The institute is equipped with the best technology of machines in diagnosis and treatment to provide advanced cancer care. We have wide range of medicines that are needed for cancer treatment with availability of medicine at more than 98%. We have electronic health information system in all service points which has fasten the provision of services to the patients. We encourage the community to have regular check up; and as per institute motto **EARLY DETECTION SAVES LIVE**

We welcome everyone aboard for the deliverance of quality cancer care services to all clients

**Dr Julius Mwaeselage**  
**EXECUTIVE DIRECTOR**

## 1. ORCI Overview

---

This health facility is one of the oldest health institutions in Tanzania having been founded in 1895 by the German colonial government. At its inception the hospital catered for German community only. In 1920, The British colonial government followed the footsteps of their predecessors and continued to provide medical services and facilities for European communities in this hospital, while Africans had to fend for themselves.



Ocean Road Cancer Institute, Block A back view



After Independence all racial barriers from the colonial past were removed and the European Hospital was re-named the Ocean Road Hospital to cater for all races. In the sixties and seventies, the Ocean Road Hospital operated as a maternity wing of the Muhimbili Medical Centre (MMC). In 1980 a decision was made by the Ministry of Health to make the Ocean Road Hospital the hub for cancer services in Tanzania, and the name changed to Tanzania Tumor Centre. In 1996, the government established through Act of number 2 an autonomous National Cancer Institute called Ocean Road Cancer Institute (ORCI).

The hospital is growing exponentially in human resource, services, expertise and in revenues. The number of patients seen at the institute has dramatically increased yearly and expected to raise more due to the public awareness campaign and public education. The institute has about 300 staff in different cadres including oncologists, nurses, medical officers, laboratory technicians, pharmacists, radiotherapists, medical physicists, radiologists, pathologists, epidemiologists, public health specialists, social welfare officers, administrators, accountants, auditors, legal officers and other support staff. The institute depends on the Government for funding, but it has its own sources of internal revenues from the services it provides to health insurances schemes, private companies, and foreigner patients.

**Table1: Number of cancer cases**

Table 1: NUMBER OF NEW CANCER AND NON-CANCER CASES													
Type	YEARS 2007 -2018												
	2007	2008	2009	2010	2011	2012	2013	2014	2015	2016	2017	2018	
Cervical cancer	1006	1288	1374	1510	1881	1896	1795	1867	1892	2,081	2,161	2,390	33
Kaposi sarcoma	404	418	447	681	814	789	654	680	674	741	752	711	12
Breast cancer	245	275	322	386	526	667	705	733	742	816	901	985	12
Esophageal cancer	256	282	307	380	511	573	601	625	643	707	745	753	10
Head and neck	206	244	272	289	361	386	411	427	439	483	526	531	7

Lymphoma	199	226	245	186	269	295	295	307	314	345	412	405	6
Leukemia	78	87	103	142	261	252	259	269	253	278	342	358	4
Urinary bladder	88	87	98	109	153	168	168	175	182	200	237	212	3
Skin cancer	108	111	123	129	141	147	147	153	161	177	198	201	3
Eye cancers	76	80	95	84	119	131	134	139	143	157	168	152	2
Prostate Cancer	69	75	85	96	93	101	116	121	129	142	251	297	2
Others	403	307	305	203	115	124	179	186	192	211	326	654	5
Sub Total	3,138	3,480	3,776	4,195	5,244	5,529	5,464	5,682	5,764	6,338	7,019	7,649	100
NUMBER OF FOLLOW -UP CANCER CASES													
Sub Total				15,567	16,365	17,143	17,914	19,353	21,164	21,569	33,934	38,685	76
HEALTH INSURANCE CLINIC- PATIENTS ATTENDED													
Sub Total				0	0	0	0	10,332	13,957	15,353	19,911	18,413	23
TOTAL	3,138	3,480	3,776	19,762	21,609	22,672	23,378	35,367	40,885	43,260	60,864	64,747	

The installation of state of art technology of medical equipments in the laboratory section, in the diagnostic imaging section as well as in the chemotherapy and radiotherapy sections has enhanced and sustained timely and quality good services rendered to ORCI customers despite their increase in number.

## 2. Mandated Functions

The Ocean Road Cancer Institute mandated functions are: -

- To control and manage the Institute, and to assume responsibility for the control and management of such hospitals or health facilities as may be vested in the Institute by order published in the official Gazette,

- ii. To provide medical care to inpatients and out-patients affected with cancer and other diseases in accordance with medical ethics,
- iii. To stimulate and promote programs of education on health and particularly on cancer,
- iv. To conduct training programs,
- v. To provide consultant services,
- vi. To perform research activities with or without association with persons or institutions inside or outside the United Republic,
- vii. To do any act for the purpose of achieving any of the above stated objects and functions of the Institute.

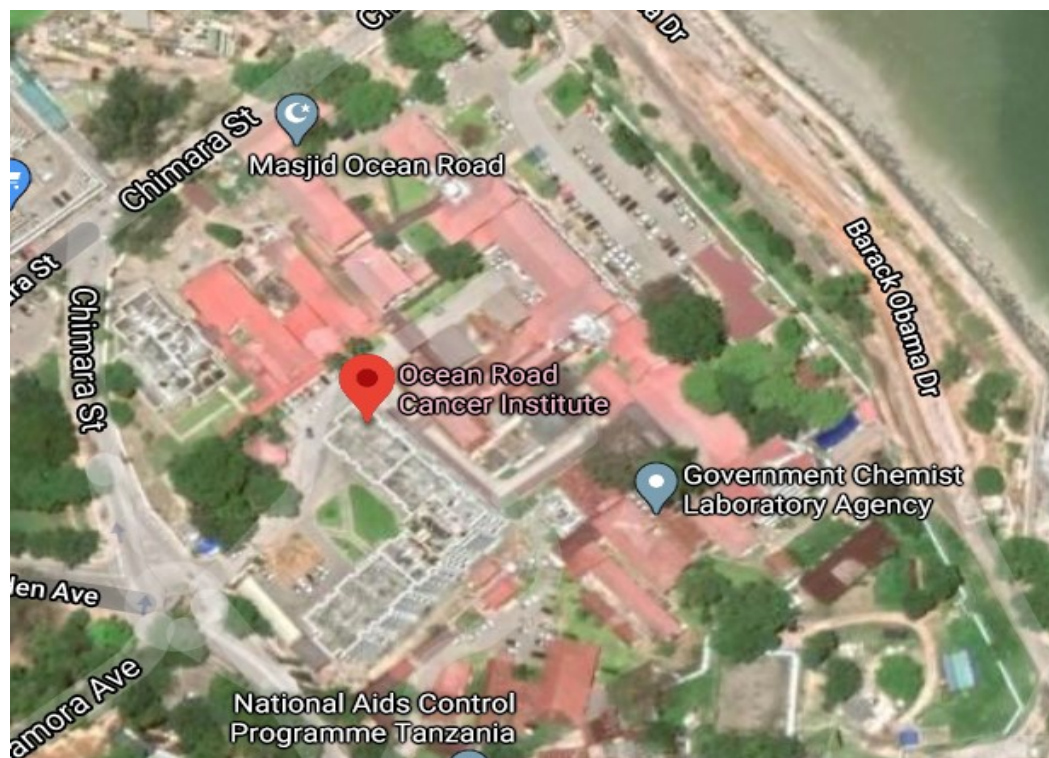


Dr. Mark Mseti one of the leading Oncologist at ORCI (second right) posing with colleagues during East African oncology summit in June, 2019

### 3. Location and Contacts

---

Ocean Road Cancer Institute is located about 200m from the Indian ocean on the junction of Barack Obama road, Samora avenue and Chimara street.



Contact Address

Post Address P.O. Box 3592

Dar es Salaam, Tanzania

Tel: +22 22 2127597

Email: [info@orci.or.tz](mailto:info@orci.or.tz)

Website: <https://www.orci.or.tz>

Social media:

Instagram: [@oceanroadcancerinstitute](https://www.instagram.com/oceanroadcancerinstitute)

Twitter: [@orci\\_tanzania](https://twitter.com/orci_tanzania)



## 4. Strategic Description

---

### **Vision Statement**

"To be a centre of excellence with national, regional and international reputation in cancer control."

### **Mission Statement**

"To provide high quality cancer control services that are equitable, accessible and affordable through cancer prevention, diagnosis and treatment, research and training in collaboration with stakeholders."

### **Core Values**

All that we do is driven by a set of values, which reflect our mission toward meeting our destined vision. ORCI is at the forefront of cancer treatment as the only specialized centre on cancer care and control, our goodwill and reputation for high standards in all that we do is crucial to our success. ORCI exists for the benefit of the public and there is a consequent public expectation for the highest ethical standards.

During implementation of FYSP III, we reaffirm our commitment to the values we hold and the principles to which we work.

### **Integrity**

We act openly and truthfully in everything we do. Employees of ORCI should not be corrupt but instead should be royal, transparent and trustful.

### **Confidentiality**

We provide medical services to our customers basing on confidentiality. ORCI vows to maintain a high level of confidentiality and abide to our professional ethics.

### **Collaboration/Teamwork**

We work together cooperatively, recognizing that our combined efforts exceed what we can accomplish individually.

## **Empathy**

We are committed to maintaining endurance in performing our duties all the time.

## **Respect**

We honor the dignity, individuality and rights of everyone, and to pay particular attention to patients' rights to privacy, confidentiality and information.

## **Accountability**

We are accountable for our actions to the public and to our stakeholders, and we are prepared to submit ourselves to appropriate scrutiny.

## **Excellence**

We are committed to the pursuit of excellence in the fight against cancer. This encompasses every aspect of our work, research, education and all the supporting activities.

picture



Dr. Zainabu Chaula (center) Permanent Secretary for MoHCDGEC during inaugural ceremony of the ORCI's Workers Council

## **The Main Strategic Objectives**

The main strategic objectives are: -

- A. HIV and AIDS Infections Reduced and Supportive Services Improved
- B. Effective Implementation of National Anti-corruption Strategy Enhanced and Sustained
- C. Institutional Capacity for Services Delivery Strengthened
- D. Cancer Medical Services Delivery Improved
- E. Cancer Prevention Services Improved
- F. Research and Training Capacity Strengthened

## **Strengths**

- Existence of Hospital building that has ward's capacity to admit 277 patients, clinics, laboratory, pharmacy and three conference rooms, and ongoing project that will increase bed capacity to 365 beds.
- Availability of special medical equipments for radiotherapy treatment, brachytherapy treatment and for cancer diagnostic
- The existence of different skilled health personnel, i.e. nurses, oncologists, medical physicists, public health specialists, epidemiologists, biostatisticians, pathologist, scientists, technologists including members of teaching staff.
- Existence of training program for clinical oncologists and radiation therapy technologists.
- Ongoing training and research programs that guarantees availability of specialist in cancer control and super specialty in future
- Usage of the LAN based network through which e-HIMS is based and efficiently used in Hospital digital data management including patients and medicines, planning, finance, procurement and human resources management.
- Excellent relationship between the Board of Trustees and management team, and all staff.
- Improved internal revenue generation to complement subvention from the Government
- Availability of budget for personal emolument, operation, medicine and medical supplies and for development projects from the Government

## OPPORTUNITIES

- Existing of the comprehensive and universal health financing mechanism through NHIF, Improved Community Health Fund and other health insurance scheme
- Good reputation of the Institute in the public eye.
- High demand of cancer health services by the society within and outside the country.
- Existence of health facility-improvement loans from NHIF and other financial institutions providing loans
- National Cancer Control Strategy in place and implementation is in progress.
- Availability of institutional cancer research funds, and collaboration with international organizations.
- Existence of Muhimbili National Hospital (MNH) for surgical oncology services
- Collaboration with Muhimbili University of Health and Allied Sciences (MUHAS) on training programs.



## 5. Description of services:

---

### 1. Cancer Prevention Services

- i. Health education to the public
- ii. Vaccination against Hepatitis B virus and HPV
- iii. Screening and early detection
- iv. CTC clinic



A client during Hepatitis B blood diagnosis

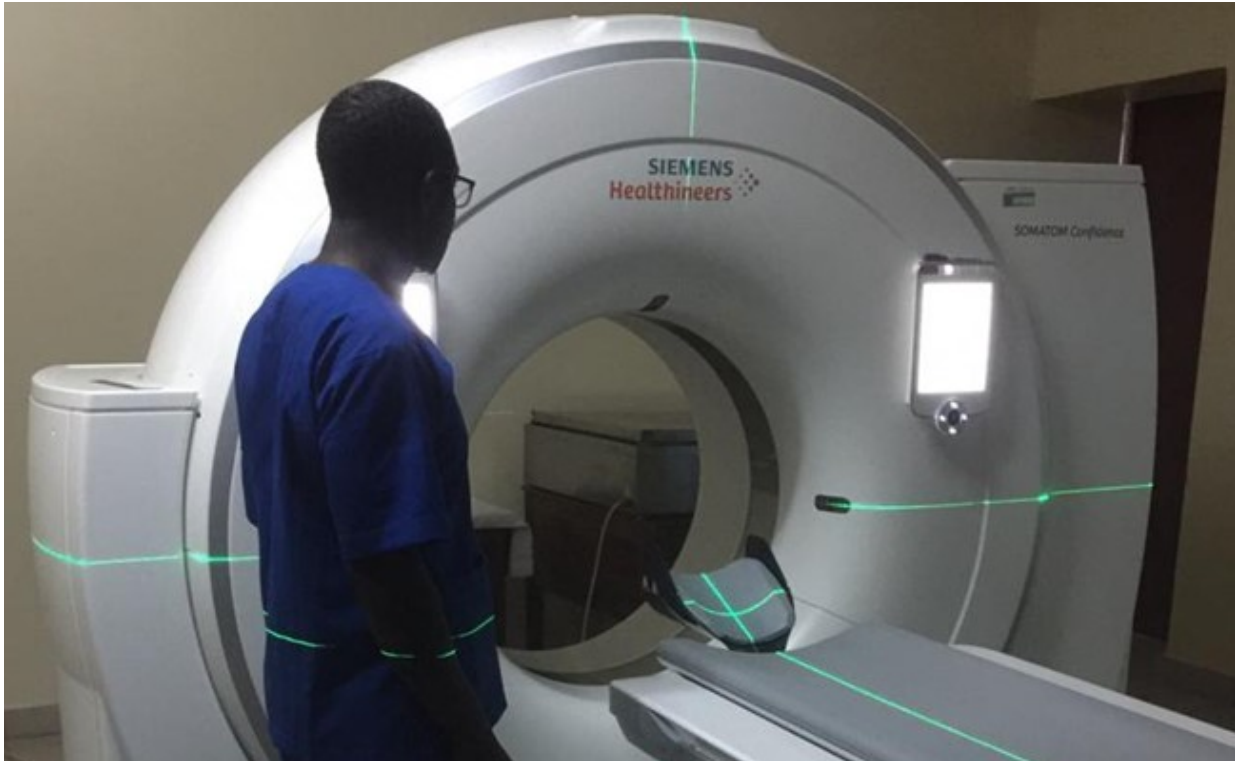
- 2. Laboratory Diagnostic services
  - i. General laboratory services
  - ii. Pathology services
  - iii. Tumor markers



General laboratory technologist during sample analysis and results compilation

### 3. Diagnostic imaging services

- i. X-ray and Ultrasound scans
- ii. CT scan



ORCI radiographer calibrating a CT Scan before diagnosis a patient

#### 4. Nuclear Medicine services

- i. Diagnostic scans
- ii. Radioactive Iodine treatment



Gamma ray camera a nuclear imaging device at ORCI's Nuclear Medicine section



## 5. Radiotherapy services

- i. External beam radiotherapy – Cobalt 60, LINACs
- ii. Intracavitary radiotherapy – brachytherapy



A linear accelerator machine used for external beam radiation treatments for patients with cancer

## 6. Chemotherapy services

- i. Cytotoxic medicines availability
- ii. Two day-wards and number of beds



Mixing and preparation of the chemotherapy drips at Chemo ward

## 7. Inpatients wards

- i. General wards
- ii. Private wards



View of the ORCI's private ward

## 8. Clinical oncology services

Oncologist works in giving consultations, major ward rounds, prescribing medicine, radiotherapy treatment planning and in counselling patients. There are a total of thirty three (33) cancer specialists who are divided for convenience purposes into three distinct firms. Firm I (Breast Cancer and Leukemia), FIRM II (GI, GU and some Gynecological Cancers) and FIRM III (Head and Neck, Lymphomas and Skin Cancers).

All specialists work five days a week (Monday - Friday). On Saturdays and Sundays only one specialist on duty attends the patients in need of specialized consultation.

The major duties of a specialist at Ocean Road Cancer institute are:

### **Conducting Out-patient Clinics**

- New and Follow up cases

### **Perform Daily service ward rounds**

- All admitted patients with serious concerns

### **Carry out weekly Major ward rounds**

- All admitted patients

### **Planning of Full courses of chemotherapy**

- Preliminary investigations
- Clinical assessment & interpretation of results
- Dose calculation & Prescription
- Prevention of anticipated effects & management of side effect
- Follow up scheme

### **Planning of Full courses of Radiotherapy (2D machines)**

- Preliminary investigations
- Clinical assessment & interpretation of results
- Conventional simulation
- Dose calculation & Prescription



- Mid treatment review and evaluation
- Follow up scheme

### **Planning of Full course of Radiotherapy (3D machines)**

- Preliminary investigations
- Clinical assessment and result interpretations
- CT simulation
- Contouring
- Plan approval and second check of approved plans
- Treatment approval
- Mid-treatment review and evaluation
- Follow up scheme

### **Teaching of junior doctors, medical students and other medical staff**

### **Conducting of Clinical Research**

## 6. Health Insurance clinic

---

Health Insurance Clinic at Ocean Road Cancer Institute was established in 2013 after it was granted permission by the then Ministry of Health to establish insurance and private clinic which will offer general medical services to the public on cost-sharing basis.

The Health Insurance Clinic-HIC was established to ensure that community with health insurance schemes or medical cover from their employers receives high quality-health care in integrated manner. The Institute has been from the commencement of the operation focusing in stabilizing the insurance and private practice in terms of safety, quality and finance.

The Health Insurance Clinic provides medical consultation, screening, diagnosis, treatment and palliative care services for non-cancer and cancer patients who prefer fast track. The clinic is designed to provide health care services in variety of setting; outpatient for non-cancer and cancer patients, inpatient and outreach services for cancer patients.

HIC has been receiving patients from other African countries because of its quality and affordable oncology service. We cordially welcome clients from all over Africa and in the world to HIC in order to profit from the quality services we are offering.

We have installed new state of the art radiotherapy machines (Linear Accelerator), which give best results in terms of treatment outcomes. We also have a wide range of internationally accepted medicines from cancer to non-cancer. Our patients receive their chemo treatment using latest technology of infusion pumps and in serene environment.

In-patients have been catered with special private rooms to cater for patient's needs, combined with caring staffs and trained doctors make patients stay at hospital comfortable

Establishment of the Clinic has brought tremendously success to ORCI, clients are members of various health insurance schemes contracted with ORCI. The clinic also serves the foreigners from various African countries. The available insurance companies so far are, NHIF, Strategies Insurance, AAR Insurance, Jubilee Insurance, Britam Insurance, Puma energy and WCF.